

**LEGEND**

- Proposed Development Site
- A - Natural Gas Receiving Area
- B - Gas Turbine and Auxiliaries
- C - HRSG and Auxiliaries
- D - Steam Turbine and Auxiliaries
- E - Power Island Electrical Equipment
- F - Flue Gas Fans and Ducting
- G - Flue Gas Cooling
- H - Absorber
- I - Stripping and Reclaiming
- J - Storage and Offsites
- K - Compression and Dehydration
- L - National Grid CO2 AGI
- M - Cooling Towers
- N - Gate House, Security and Parking
- O - Admin, Control Room and Stores Buildings
- P - Raw Water Treatment
- Q - Attenuation Pond
- Emergency Access and Egress

**NOTES**

Reproduced from Ordnance Survey digital map data © Crown copyright 2020. All rights reserved. Licence number 0100031673.

**ISSUE PURPOSE**

PEI REPORT

**PROJECT NUMBER**

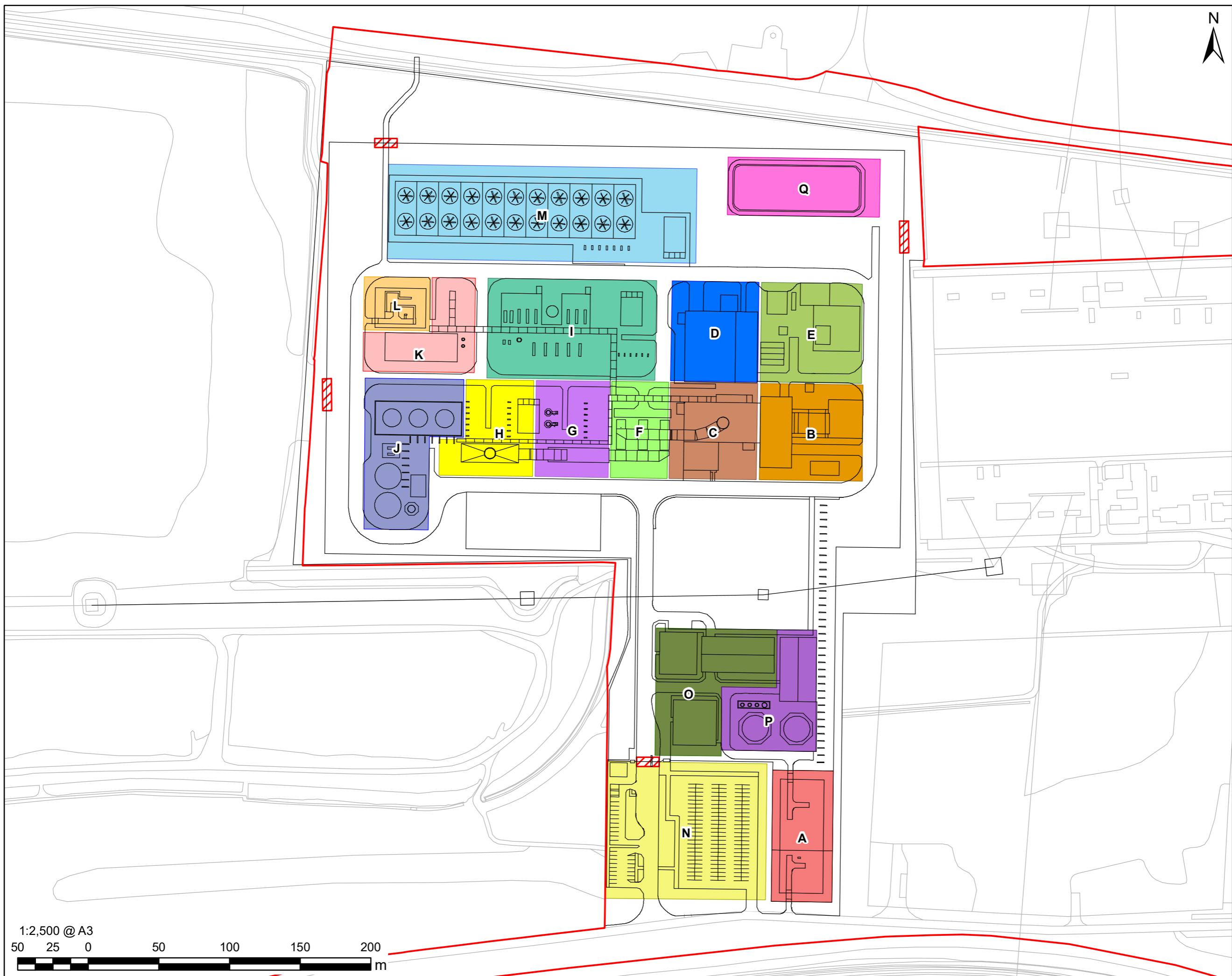
60625943

**SHEET TITLE**

Indicative Layout  
Proposed PCC Site

**SHEET NUMBER**

Figure 4.1



This drawing has been prepared for the use of AECOM's client. It may not be used, modified, reproduced or relied upon by third parties, except as agreed by AECOM or as required by law. AECOM accepts no responsibility, and denies any liability whatsoever, to any party that uses or relies on this drawing without AECOM's express written consent. Do not scale this document. All measurements must be obtained from the stated dimensions.