



Ferrybridge Community Liaison Group

17th July 2019



Agenda

- Safety Moment
- Previous Minutes
- Project/operations updates
 - Multifuel 1
 - Multifuel 2
 - Etex Plasterboard
 - Ferrybridge 'D' CCGT
 - Ferrybridge 'C'
- AOB



Safety Moment



Previous Meeting Minutes

- **Actions from 17th April:**
 - HF to send JF details of noise and odour complaints
 - JF to find out details of bund currently between FM2 and motorway
 - JH to confirm figure for wagon movements associated to the Ballast Phoenix facility once operational

Multifuel 1 Operations



FMFEL Update

- Plant continues to be operated safely – no LTIs since November 2018.
- Environmental Performance – EA class 'A' operator.
- £1,000 donation to ECHO (Every Child Has Options).
- Engaged with local schools to host plant educational visits. Up to 6 visits per academic year offered.
- FM2 Recruitment Complete – last position filled this week.



Recruitment Mainly Local

| Less Than | No of Staff | % |
|-----------|-------------|------|
| 5 miles | 31 | 33% |
| 10 miles | 42 | 45% |
| 20 miles | 61 | 66% |
| 30 miles | 75 | 81% |
| 40 miles | 83 | 89% |
| Total | 93 | 100% |



How Efficient is FM1?

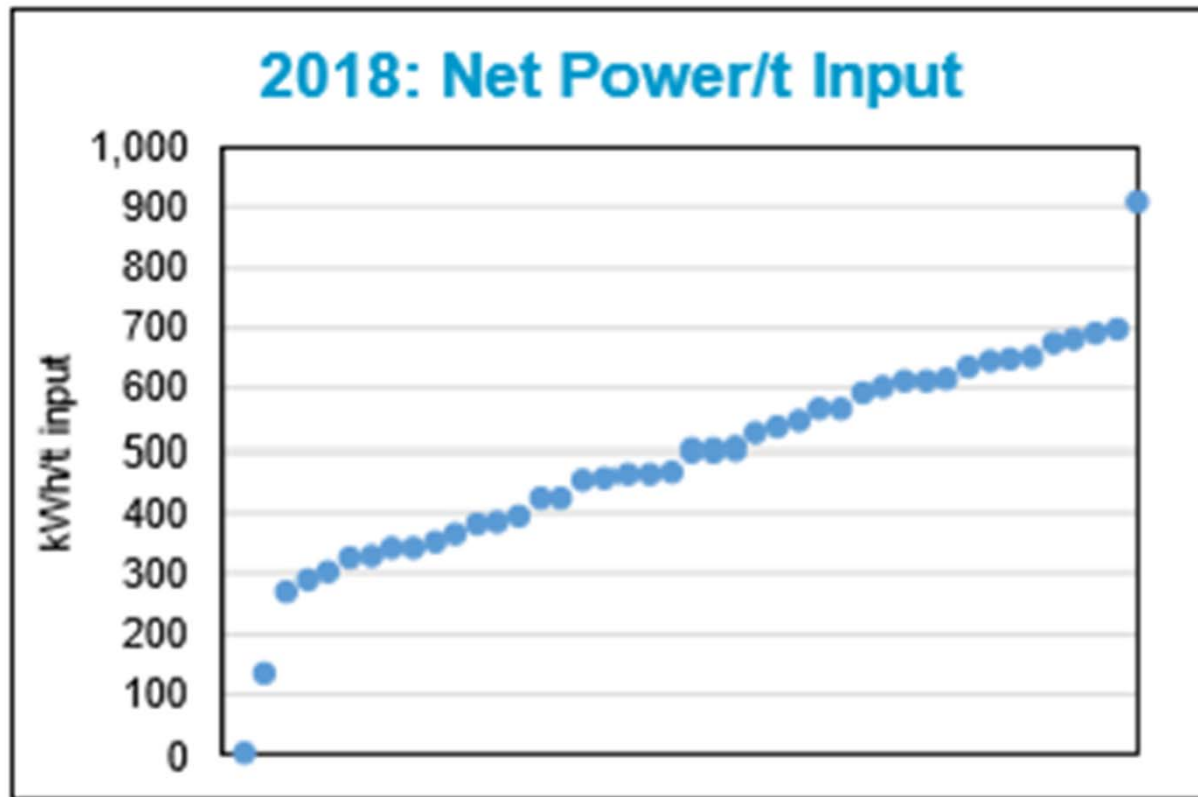


Figure 14: 2018 Net Power Exported per tonne of Input
Source: Tolvik analysis, 43 records



Availability is key

| Operator | Simple Average Availability | Capacity Weighted Average |
|----------------|-----------------------------|---------------------------|
| MFE | 94.5% | 94.5% |
| Veolia | 94.4% | 94.3% |
| MES | 91.5% | 91.1% |
| Cory | 91.1% | 91.1% |
| FCC | 90.0% | 87.9% |
| Suez | 88.2% | 88.0% |
| Council | 83.8% | 84.4% |
| Viridor * | 79.5% | 83.4% |
| Other | 77.5% | 77.1% |
| Average | 87.3% | 89.8% |

Figure 22: 2018 Average Availability by Operator



Multifuel 2



IBA Plant

Ballast Phoenix[®]

Ferrybridge IBA Processing Plant - Project Update

- Project programmed completion date: 18/10/19 the site will receive IBA from the end of August for commissioning of the plant
- Process Building is 85% complete, internal offices and control room are being finalised
- The process equipment installation is underway and will be completed by the end of August
- The site is now completely paved apart from the access road which will be one of the last areas to be completed
- The surface water storage tank is under construction currently and will be completed by the beginning of August
- CLG Site Visit Offer – Mid September to Mid October. BPL would like to receive expressions of interest for the site visit. Date and details to be confirmed nearer the time.

Ballast Phoenix

A sustainable source of aggregate



Etex Plasterboard

CLG Meeting July 2019



Natural Gypsum Conversion (New Plant)

etex building
performance



Natural Gypsum Conversion



- The new plant is running with natural gypsum (rock).
- we just have a small issue with reclaim processing equipment.
- that means full factory acceptance tests on the specified system is delayed to Qtr.2 of 2019.

Social Responsibility

etex building
performance



Cancer Research Receive Check



Jayne Maydock (HR Director) presents a cheque to Cancer Research for £10,669.36.

Charitable Events For MIND

MIND is the chosen charity for 2019 at Etex. An increasing amount of events are being undertaken planned.

- Raffles.
- BBQ's.
- Golfing events.
- 100 mile lakes bicycle event.
- Day at the races.



Site Update.

etex building
performance



Site Key Indicators



2nd Qtr (YTD)

- 12 Million m2 of Board Produced.
- 131,700 hours worked on site.
- No Lost Time Accidents
- No Medical Aids.
- 430 plus days since last Lost Time Accident.



Pylon Removal

National Grid Work. (ongoing)

- Some cables and Pylon's supports have been removed.
- Date for remaining have not been confirmed.



Noise

We are actively working on a recently received noise complaint that has come to us via Selby Council.

- June - we had a external company check the bearings and fan balancing for the impeller blades that are connected to the steam stacks.
 - Results everything working to requirements.

Next Stage

- Shut the a section of the plant down and using a large crane remove and refurbish, bafflers connected to the stacks.



FERRYBRIDGE WINS AWARD



Ferrybridge – Global best plant in the Etex Building performance division



Ferrybridge UK - a model plant in terms of continuous improvement, employee engagement, with consistent progress year over year, and an incredibly dedicated team led by Michael Wainwright.

A Fantastic result and testimony to all the hard work, and commitment from everyone to achieve this award well done Ferrybridge.

etex building
performance

CLG Meeting April 2019



Thank You

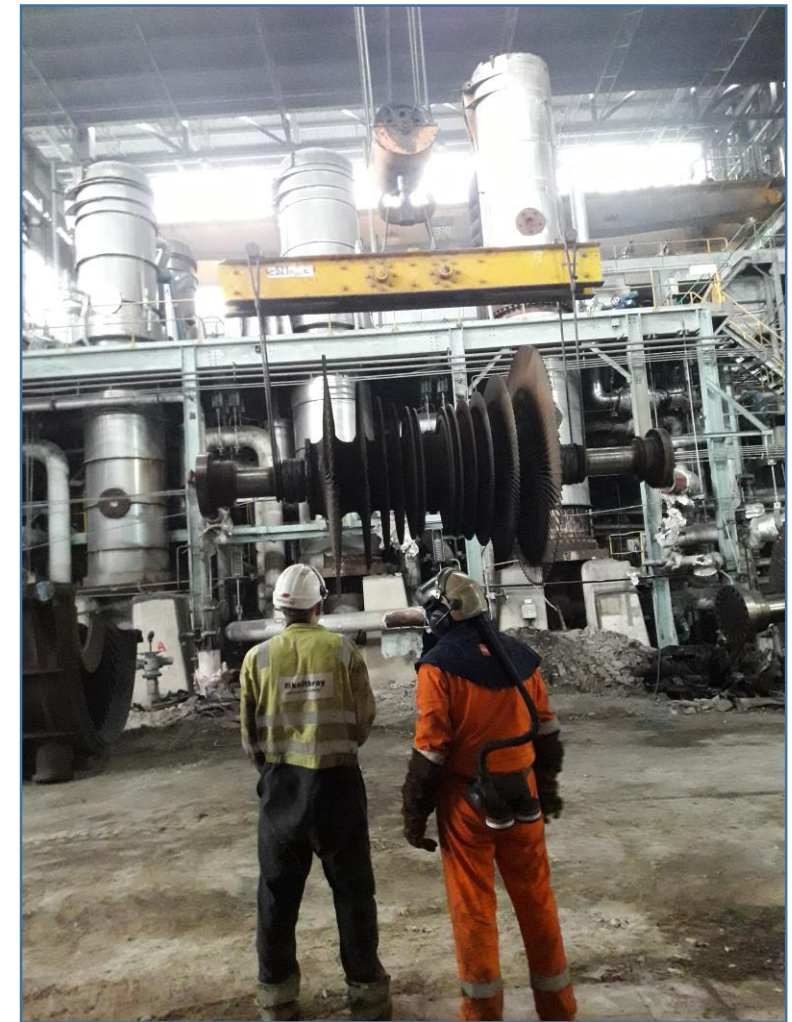
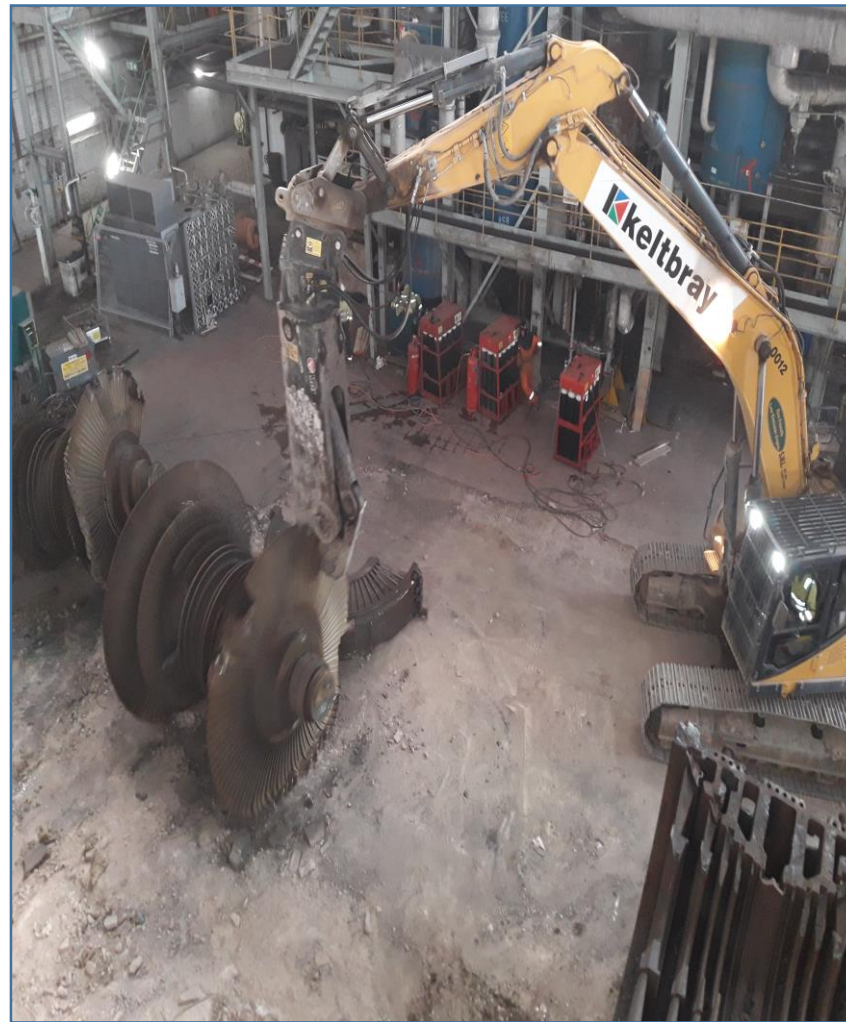


Ferrybridge 'C' - Demolition



Preparation works are underway to Cooling Tower 6 in readiness for the explosives demolition planned for late July.

 **keltbray**
serious on safety ✓



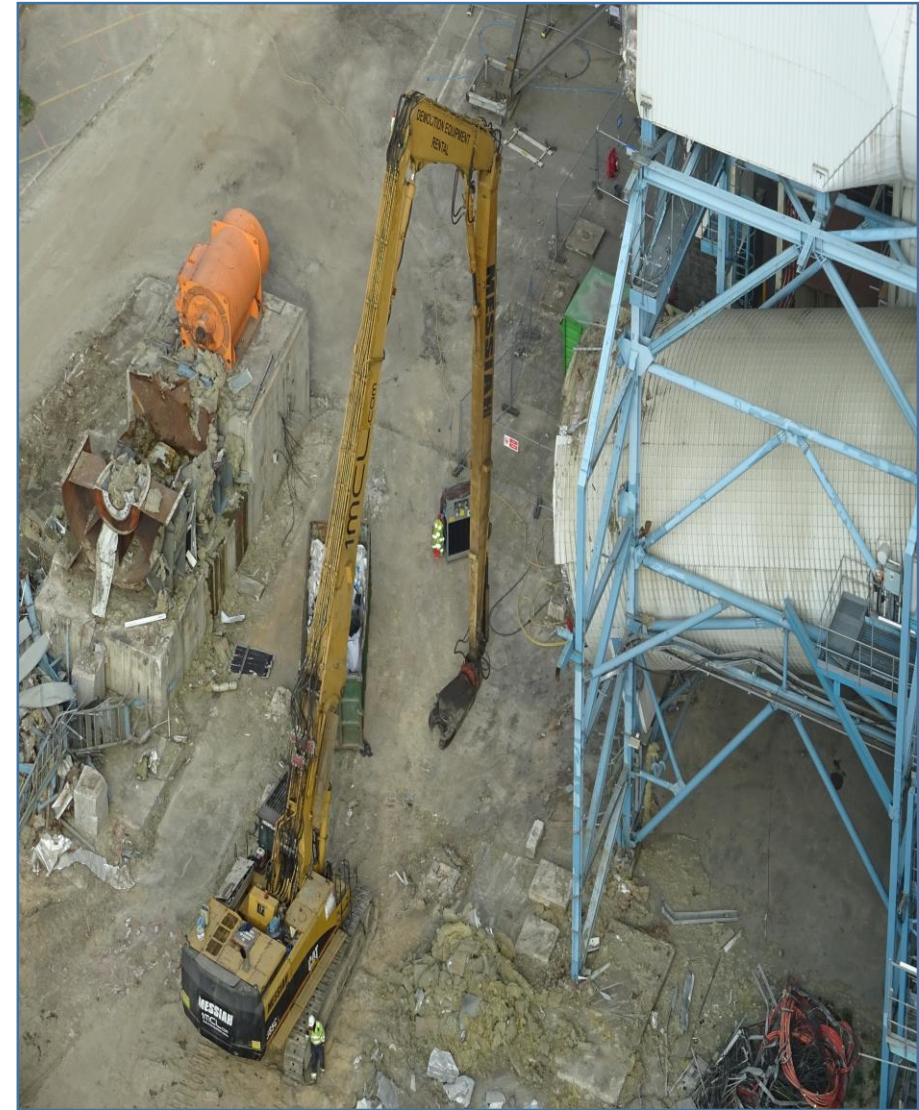
Deplanting works are underway within the Turbine Hall, Keltbray have re-energised the overhead cranes to assist with the demolition process

 **keltbray**
serious on safety ✓



Specialist demolition excavators are removing the packs from each cooling tower, the plastic filtration systems are shredded and blended for use as fuel at the FM1 facility

keltbray
serious on safety ✓



High Reach demolition of FGD1 facility has commenced

 **keltbray**
serious on safety 



An extensive asbestos removal program is underway

keltbray
serious on safety ✓



**Resident liaison meeting
have been held and the pre-
blowdown meeting will be
held 15th July 2019.**

**6 Monthly Road survey has
been carried out week
commencing 09/07/2019**

**Monthly Noise, Dust and
Vibration readings are
submitted to WMDC**

Ferrybridge 'D' CCGT

- SSE is reviewing strategic options with respect to new build CCGT assets and their location, and expect to make a decision regarding the progression of Ferrybridge 'D' by early 2020. In the meantime, the project team continue to work towards the project being in a DCO application ready state.
- www.sse.com/ferrybridged



Ferrybridge 'C' - Site Redevelopment

- Ongoing assessment of wider site for redevelopment opportunities
- Coal Yard
 - Having concluded that the coal yard is not required for CCGT development, SSE is considering options for this area of site including the potential sale of land.
- Brotherton Ings
 - SSE is required to provide a remediation plan to the EA by November 2019
 - For the foreseeable future, Brotherton Ings will be managed in accordance with the EA permit.
 - Feasibility of ash reclamation is being assessed
- Fryston Woods
 - Working closely with the Friends of Fryston Woods regarding a long term sustainable solution.



AOB

- Next meeting - Wednesday 16th October 2019 at 10:30am



Thank You

