

LEGEND

- The Order Limits
- 1km Study Area
- Noise Sensitive Receptor (NSR)
- Proposed PCC Site

Daytime Construction Noise Level Contours (dB LAeq,12hr)

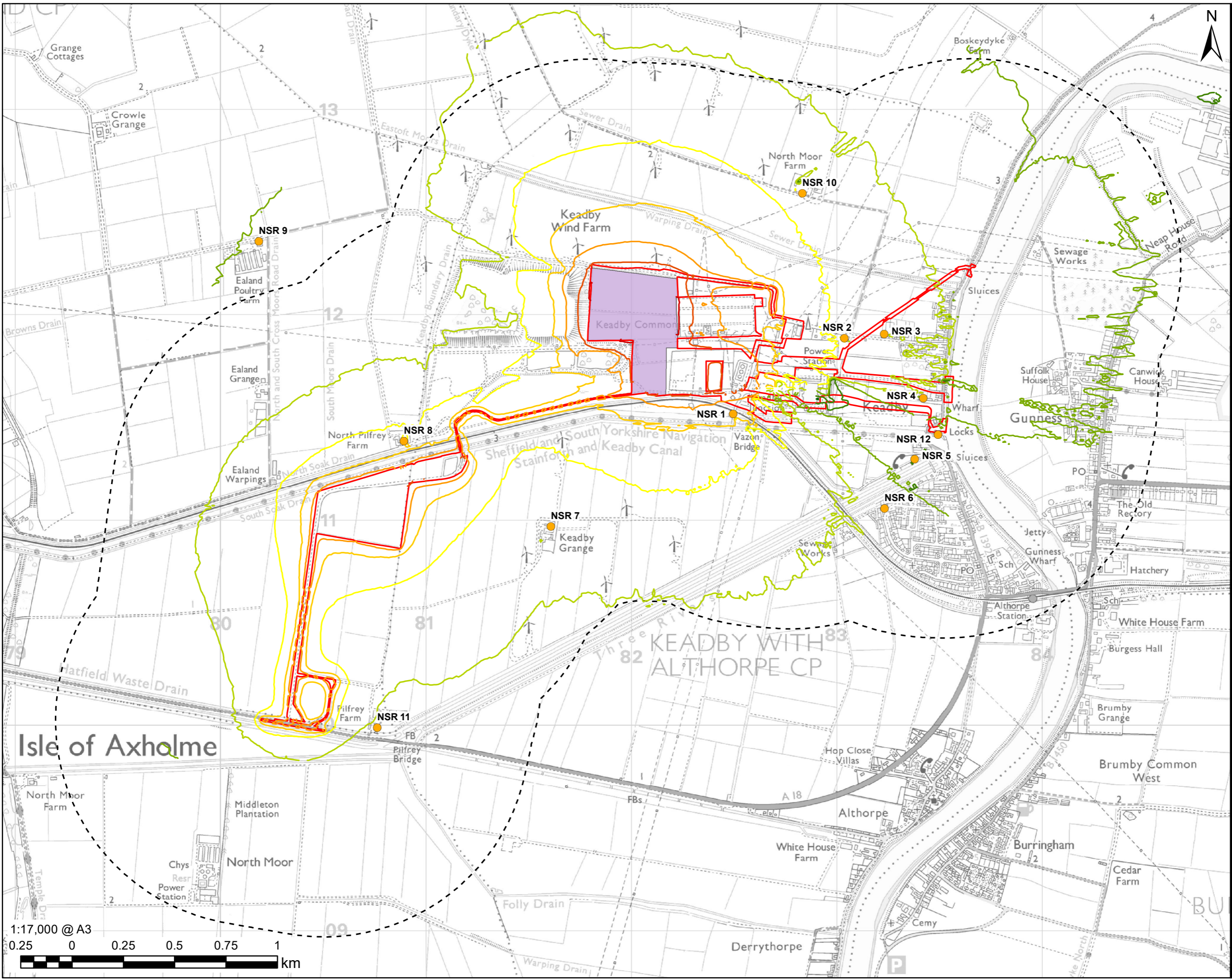
- <=35
- <=40
- <=45
- <=50
- <=55
- <=60
- <=65
- <=70
- <=75

NOTES

Reproduced from Ordnance Survey digital map data © Crown copyright 2021. All rights reserved. Licence number 0100031673.

Noise level predictions in this figure based on the methodologies outlined in Chapter 9: Noise and Vibration and Appendix 9A: Construction Noise Information

ISSUE PURPOSE
ENVIRONMENTAL STATEMENT
PROJECT NUMBER
60625943
SHEET TITLE
Main Civil Works
Construction Noise
Level Predictions
SHEET NUMBER
Figure 9.2



Revision: 01 Drawn: AW Checked: TD Approved: SE Date: 13/05/2021
Filename: K:\07 CAD & GIS\02_Maps\Environmental Statement\Acoustics\K_ES_Fig_9.2_Construction_Noise_Levels_A3_20210512_R01.mxd

This drawing has been prepared for the use of AECOM's client. It may not be used, modified, reproduced or relied upon by third parties, except as signed by AECOM or as required by law. AECOM accepts no responsibility, and disclaims any liability whatsoever, to any party that uses or relies on this drawing without AECOM's express written consent. Do not scale this document. All measurements must be obtained from the stated dimensions.