

# Keadby

## SSE Thermal Community Investment Package

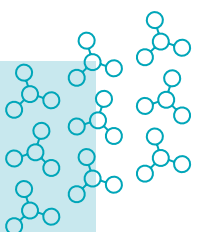
We are committed to our role as a responsible neighbour and are working to invest in the communities we operate in through engagement, support and funding. We are introducing a Community Investment Package, including a fund of £25,000 per year, for community projects around the existing Keadby Power Station site.

During April and May 2024, we held a consultation in the area around the Keadby Power Station site to give stakeholders the opportunity to provide their thoughts and ideas and for us to capture this feedback. We are working with local communities, community group representatives and stakeholders to design a package that takes local needs and aspirations into consideration.

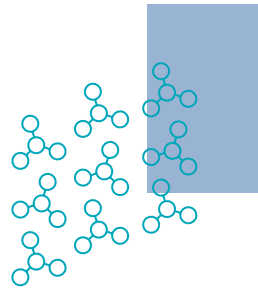
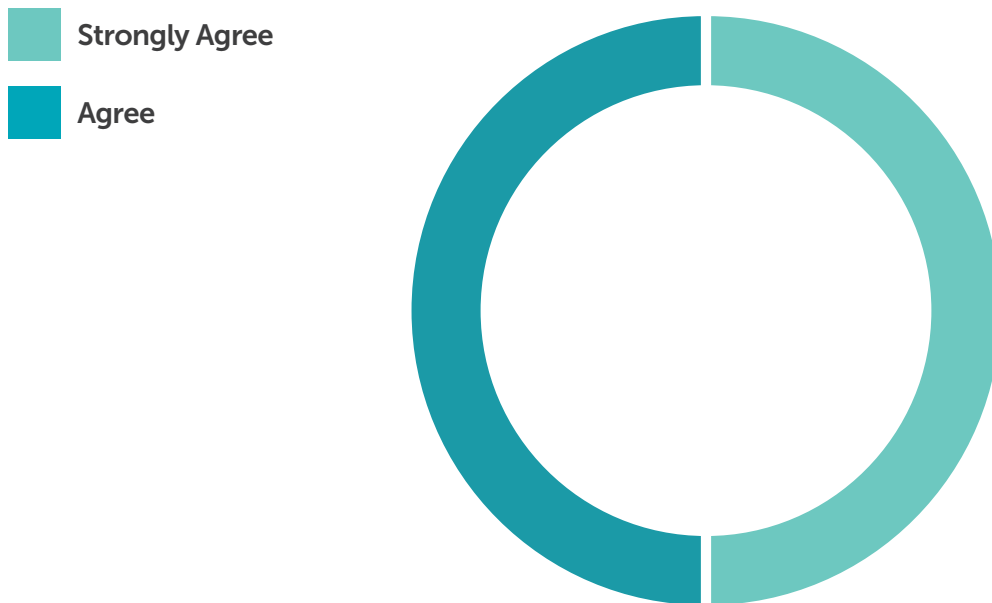
We held two drop in events at local venues to meet people in person, as well as providing the opportunity for people to ask questions and discuss ideas. We gathered thoughts and feedback via written and online feedback forms.

### This report shows what you told us

**80%** of respondents **support** or **strongly support** the introduction of a Community Investment Fund in the area around Keadby Power Station.



**100%** of respondents **agree** or **strongly agree** with the proposed geographical approach, which doesn't exclude any groups, charities or organisation from applying to the fund, but will prioritise projects in the parishes of Keadby with Althorpe, Gunnes as well as the Isle of Axholme North.



Priority will be given to projects which fall into a number of key areas to ensure that local needs and the unique characteristics of the community are taken into account.

#### **Suggested focus areas received during the consultation included:**

- Biodiveristy, natural environment and habitat enhancement
- Local skills development
- Raising aspirations
- STEM skills and awareness
- Energy efficiency and reduction in energy use
- Service provision, such as local clubs, activities or groups
- Ecosystem improvement
- Transport Provision

### **Priority Areas for the Keadby Fund**

One of the aims of the consultation was to identify key areas of importance for funding in the communities around the Keadby site. The feedback received identified three priority areas for this fund:

- Service provision, such as local clubs, activities or groups
- Biodiversity, habitat and natural environment enhancement
- Energy Efficiency and reduction in energy use

For more information please visit:

[www.ssethermal.com/communities](http://www.ssethermal.com/communities)

