

SLOUGH MULTIFUEL PROJECT

Community Update |
November 2021

|| Introduction

SSE Slough Multifuel Limited, a joint venture between SSE and Copenhagen Infrastructure Partners (CIP) is constructing a new Multifuel Plant at the Slough Heat and Power (SHP) site on the Slough Trading Estate.

The construction work is being undertaken by the Engineering, Procurement and Construction (EPC) contractor Hitachi Zosen Inova (HZI). Following completion of the demolition works and enabling works, the main construction work began in May 2021 and is expected to be completed in early 2024.

The Slough Multifuel Project will use pre-processed waste derived fuel (WDF) to generate electricity that can be exported to the electricity grid network. Once complete, the new Multifuel Plant will also provide steam to the SHP heat networks, which provide steam and hot water to neighbouring businesses on the Slough Trading Estate.



The Slough Multifuel project currently under construction – image taken in October 2021

|| Update

The existing planning permission for the Project, granted by Slough Borough Council in May 2017, allows the Multifuel Plant to generate up to 50 megawatts (MW) of electricity. We are now seeking to increase the efficiency of the Plant so that it can generate up to 60 MW of electricity.

Because we want to increase the generating capacity of the Multifuel Plant to more than 50 MW we need to obtain development consent from the Secretary of State for Business, Energy and Industrial Strategy. Development consent is granted in the form of a Development Consent Order (DCO).

|| Update continued.

The application for development consent will be submitted to the Planning Inspectorate who will administer the process on behalf of the Secretary of State.

Before an application for development consent can be submitted it is necessary to engage and consult with the local community, the local council and neighbouring councils and bodies such as the Environment Agency. The application needs to include a Consultation Report setting out how the comments received have been taken into account. The final decision on whether to grant a DCO is made by the Secretary of State. You can find out more about the DCO process on the Planning Inspectorate website

<https://infrastructure.planninginspectorate.gov.uk/application-process/the-process>

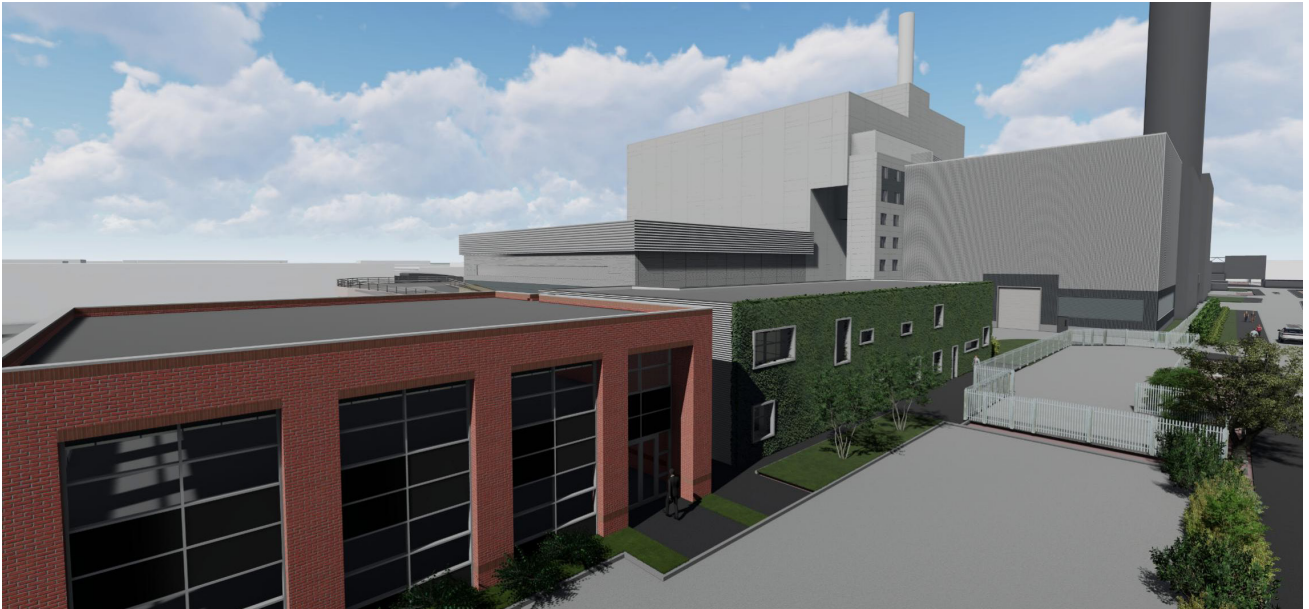
|| What does this mean for local people and businesses?

In order to increase the efficiency of the Multifuel Plant some works will be required to the boilers and steam turbine. For the most part, these works will be internal and there is not expected to be any change to the visual appearance or size of the Plant from that which was approved by the planning permission in May 2017.

The increase in efficiency and generating capacity will not require any increase in the hourly throughput of WDF-

within the Multifuel Plant or in the number of approved deliveries to the Plant.

The proposed works and changes to the Plant will be fully assessed, however initial modelling work has indicated that there will be no material change in air quality impacts or other environmental effects. The full findings of those assessments will be reported in an Environmental Statement that will form part of the DCO application submitted to the Planning Inspectorate.



An image of what the completed Multifuel plant will look like

|| What happens next?

Following this community update we will undertake further environmental assessment work and prepare a Preliminary Environmental Information Report (PEIR). The PEIR and other information will be made available as part of a further stage of engagement and consultation with the local community and other stakeholders, which will take place in Spring 2022. Details of this and how to get involved will be publicised in a variety of ways in advance.

We anticipate submitting our DCO application to the Planning Inspectorate towards the end of 2022. A decision on the application would be made by the Secretary of State in early 2024. In the meantime, construction of the Multifuel Plant, as approved by the May 2017 planning permission, will continue. The Plant is expected to be completed and enter commercial operation later in 2024.



The Slough Multifuel project currently under construction – image taken in October 2021

|| Have your say

As part of the DCO process we would welcome your feedback on our proposals to increase the efficiency of the Multifuel Plant. To get involved and to find out more information, please visit our website

<https://www.ssethermal.com/energy-from-waste/slough-multifuel>

A Comments Form is available on the website.

Please provide comments by **Friday 17 December 2021 at 5pm.**

There are also other ways to contact us and be involved, please:

Phone on **0800 335 7003** and leave a message – if you would like us to call you back, please include your name and number as part of your message

Send an email to thermalenquiries@sse.com

Use our Freepost address – send to 'Freepost Slough Multifuel'

More information

For more information on the project, construction activities at the site or to provide feedback on these proposals, please visit:

<https://www.ssethermal.com/energy-from-waste/slough-multifuel>