



Ferrybridge Community Liaison Group

17th January 2018



Agenda

- **Safety Moment**
- **Previous Minutes**
- **CLG Terms of Reference**
- **Project/operations updates**
 - **Ferrybridge 'D' CCGT**
 - **Multifuel 1**
 - **Multifuel 2**
 - **Etex Plasterboard**
 - **Ferrybridge 'C'**
- **AOB**



Safety Moment



Previous Meeting Minutes

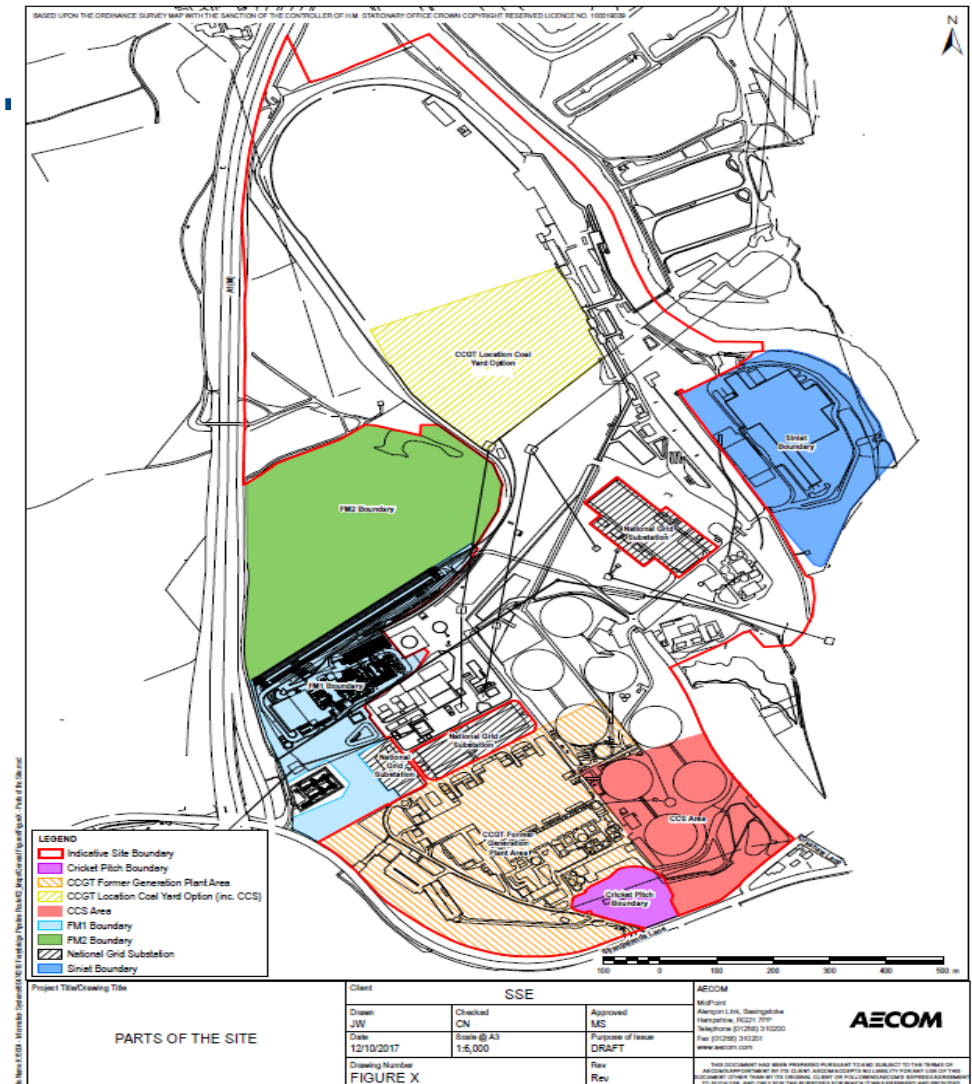


CLG Terms of Reference



Ferrybridge 'D' CCG

- Up to 2 CCGT units are proposed to be built (circa 1,800MW output)
- Two potential siting options are under consideration:
 - On the site of the coal-fired power station
 - On the coalyard
- Gas supply connection (approx. 9km) required to the north east of the site, including AGI and gas reception facility
- Up to 4 cooling towers to be retained



Ferrybridge 'D' CCGT

- EIA Scoping Report now submitted to PINS
 - This sets out how we will assess environmental impacts of the plant
- Like FM2, two stages of consultation will be undertaken
 - One in Spring 2018
 - One in Autumn 2018
- You can share your views at exhibitions, in writing, by email or through the website www.sse.com/ferrybridged
- The application will be submitted Q1 2019 and then assessed by the regulators through an examination held mid 2019
- If granted, consent would be given Q2 2020
- If built, the earliest construction would start is mid-2021.



Multifuel 1

- Safety – FMFEL maintains a good safety performance – it is now 827 days since we had a lost time injury.
- Environment – LRQA completed their Stage 1 ISO 14001 accreditation audit on 15th January.
 - FMFEL expects accreditation in March.
- According to the EA OPRA score, FMFEL has moved from a Category C to Category B operator.
 - (narrowly missing Category A)
- Plant is now very reliable:-
 - Line 1 has been on-line since grate repaired 21st September
 - Line 2 has been on-line since grate repaired 7th June
 - The plant has processed more than 1.5 million tonnes since first fire.
- Recruitment Open days for FM2 were held in December.
 - Currently we have more than 450 applicants for 41 new positions.
 - The first recruits will start in May.



Multifuel 2





Hitachi Zosen
INOVA

Community Liaison Group Meeting
Wednesday January 17th 2017
Ferrybridge Multifuel 2 Project

Civil and Mechanical Construction

Key Activities completed and upcoming

| Civil Engineering

- | Progress the Underground Services.
- | Tipping Hall Steel to start early 2018
- | Tipping Hall construction and Ramp Progress
- | Turbine Steel Complete
- | Admin building - office fit out

| **Mechanical & Electrical Installation**

- | Boiler steel work completed
- | Boiler modular installation progressing
- | Turbine modular building started and progressing
- | Process deliveries and unloading.
- | Boiler erection to continue and installation.
- | Electrical contractor to commence.

Overview of the FM2 Construction Site



Overview of the FM2 Construction Site



Overview of the FM2 Construction Site





Overview of the FM2 Construction Site



Overview of the FM2 Construction Site



Overview of the FM2 Construction Site



Construction Update

- | The construction Site is currently working 07:00 – 19:00hrs with only critical works with minimal numbers taking part outside these hours – All work after 19:00hours is carried out in line with the development consent order.
 - | Current Man Power is approx 700 personnel including the workforce, management and office staff.
 - | We are maintaining the 24h call number for complaints (security) who will contact the HZI duty manager immediately to investigate any complaint.
-

Possible Community Impact

Noise

- 4 permanent noise monitoring stations installed around the perimeter of the site.
- Work arranged to mitigate impact on the local environment, Inspections/monitoring carried out by HZI to ensure noise does not exceed the limits
- Daily diary's carried out that record all works undertaken and any unusual or potential impact on the local environment.
- 0 complaints received in the reporting period
- 1 Noise compliant in total

Lighting

- Distributed supply.
- Non-intrusive positioning of lights.
- 0 complaints received

Traffic

- Traffic management plan continuously monitored and modified to suit the required needs.
 - 0 complaints received
-

Possible Community Impact

80% of all deliveries now on site

Impending Deliveries:

- 21/01/2016 - Reactor delivery - Road closure will be in place from 20:00 hours on 20.01.2018 until 05:00 on 21.01.2018 from junction 43 of the A1(M) Southbound to the M62 link road (M62 Eastbound) The closure will be enforced by local Police.
 - 12/02/2018 Turbine 76m in length, Police escorted – (Time TBC)
 - 15/02/2017 – Turbine generator – 115 Tonne. Police escorted – (Time TBC)
 - February, March, April –
 - Silos and Tanks
 - Steel
 - E Houses
 - Ducting
-

Giving Back to the community

- | Throughout the Project HZI in partnership with SSE have and will continue to promote and assist local charities to use as incentives for safe working. The following Charities have received donations of
 - | Yorkshire Air Ambulance. - £1500
 - | Osgoldcross Youth Club. - £1500
 - | Fairburn Primary School. - £1500
 - | Wheelchair for local school pupil - £3000
 - | Smawthorne Community Project - £500
 - | Sheffield Children's Hospital - £500
 - | Alex Craven Fund – £4000
 - | John Bates - £2500

Giving Back to the community



My name is Jonathan Bates who went on my motorbike on the 18 February 2015 to Worsbrough Dale Park to tell my 11 year old son Nathan who was playing 5 a side football with his friends to come home in 1 hour for tea. After telling Nathan I set off back home but after approximately 1000 yards I hit a pothole making me lose control of my motorbike and I slid into a parked van which broke my neck and back and ribs and multiple bones which damaged my spinal cord leaving me paralyzed from my chest down and in a wheelchair all the time.

Soon after being discharged from Northern General Hospital the Spinal Unit hospital I went to the Spinal Games I got spotted by Team GB coaches



The FM2 Team presented Jonathan a cheque for £2500 to purchase a new rifle

Giving Back to the community

- | **£4000 boost**
- | ***A donation from the Ferrybridge Multifuel 2 construction project has given a significant cash boost towards the fundraising efforts of a local family.***
- | 19TH December 2017 - We have had a lovely afternoon at Ferrybridge. Before we went to America the team at SSE Hitachi Zosen Nova donated £4000 towards Alex's operation. They also visited us the week before we flew and brought Alex a box of goodies to take on the plane with him and some dollars for the trip and invited us to the site for a visit when we got back. Today we went for our visit to site. We had some food, alex got to see how things work and the cranes and he got own ID badge, hard hat, hi Vis and model truck! Alex told everyone about his trip and even showed everyone how good he is at walking in his walker now. Alex had a lovely afternoon, thanks everyone at SSE Hitachi Zosen Nova for all your support. Sarah Louise Craven.



Thank you very much
for your attention

Multifuel 2 and IBA Plant

- A planning application for the IBA plant will be submitted to WMDC in the next 3 weeks
- If granted planning permission, construction would start late Spring 2018 and be completed in 9-12 months
- To free up the land for IBA, the ecological enhancement land for FM2 is being moved to the other side of the A1(M).
 - This required a change to the FM2 DCO which is currently being assessed by the regulators

Etex Plasterboard



CLG Meeting January 2018

Safety



- 3 Years and 6 months without Lost Time Accidents now since June 2014
- ISO 14000 transition assessment successful and certification awarded (Environmental Management System)



Noise Complaint



- JPM Acoustics have commissioned a site study and made a recommendation on an acoustic fence (dimensions and location)



Noise Complaint

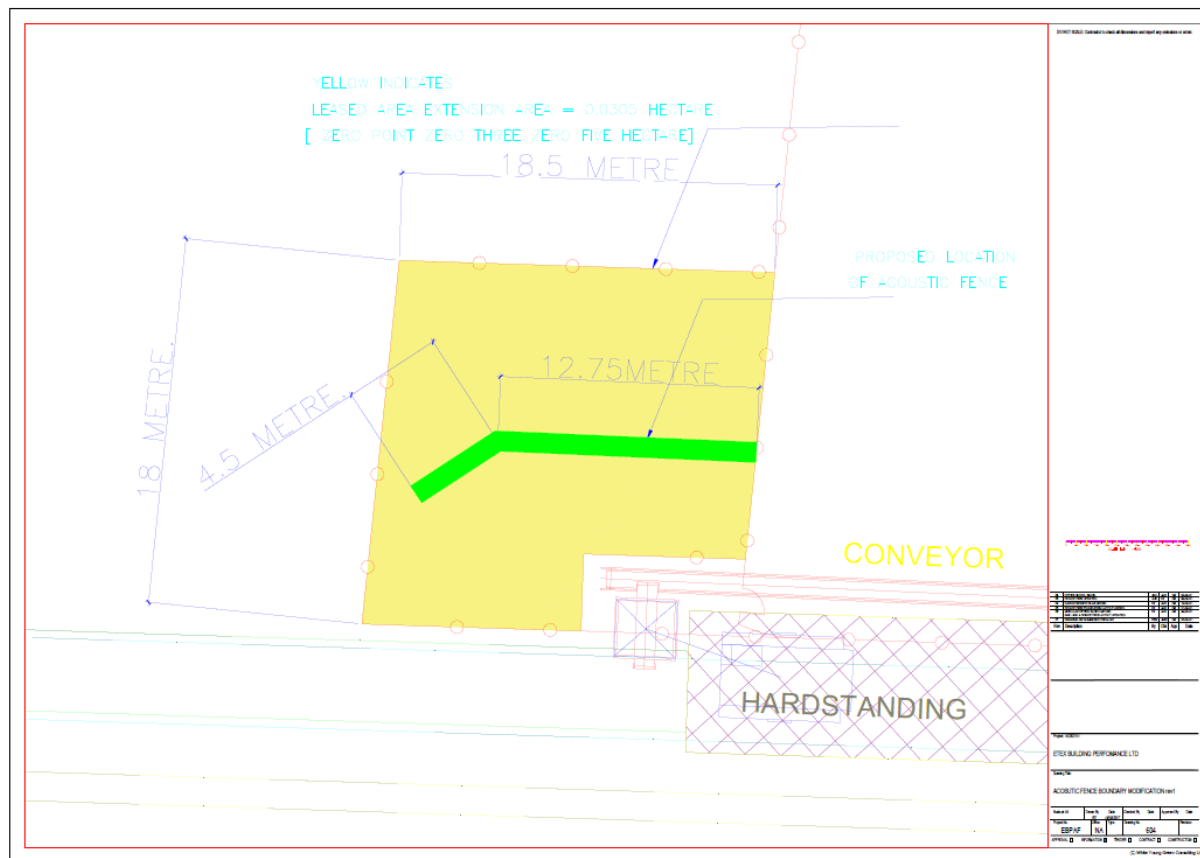


- Fence is a composite made from timber cladding and a sound absorbent mineral fibre slab with a protective layer of rot proof open weave fabric



Noise Complaint

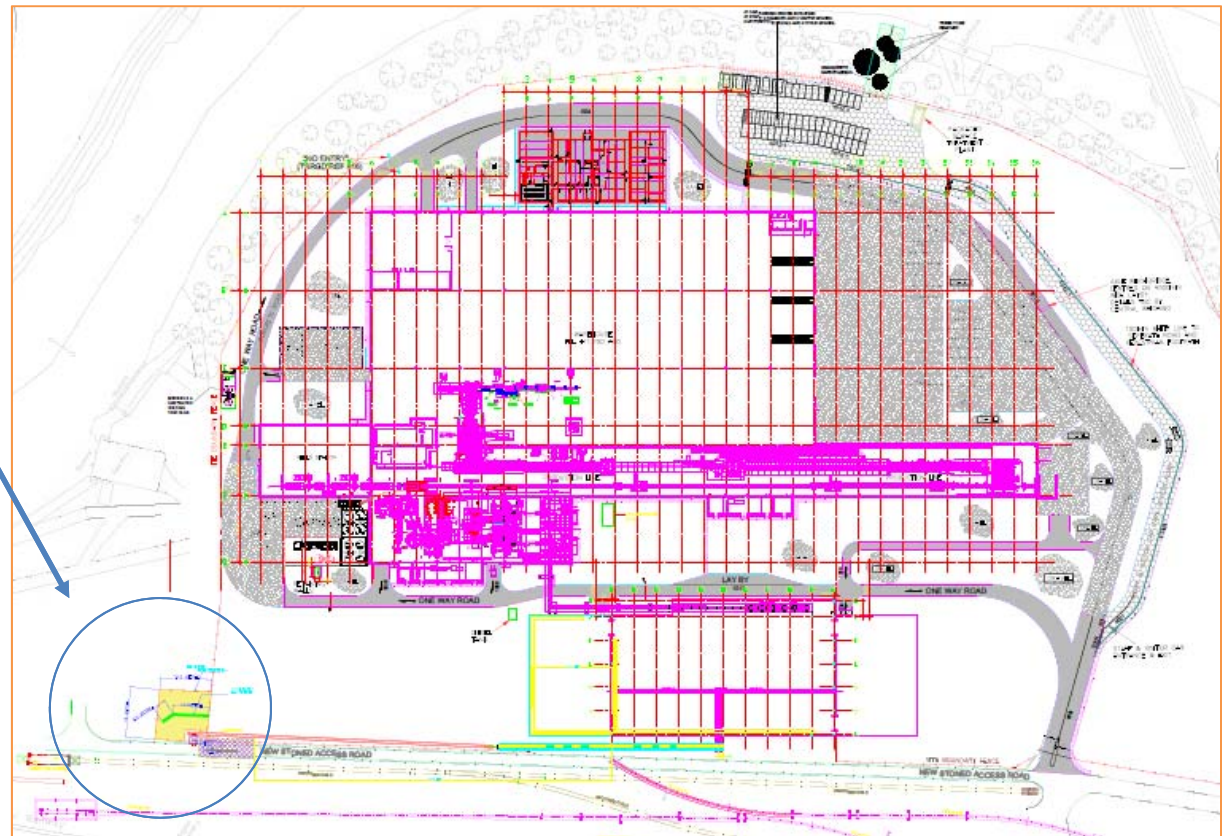
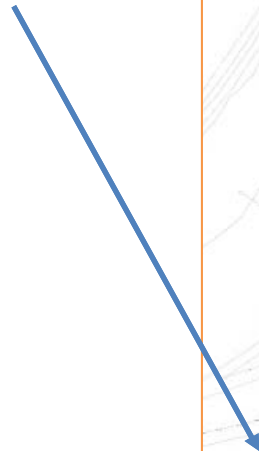
- Drawing showing land requirements (18m x 18.5m) submitted for rent review with SSE (Nov 2017). Negotiations are ongoing



Noise Complaint



Proposed location



Noise Complaint



- Pre-planning application submitted to Wakefield MDC in December. This confirmed that planning permission is required (requires ecological survey and topological survey)
- 1000 cu M of earth spoil set aside for foundation of acoustic fence (one option)
- Next steps – apply for planning permission (subject to rental of SSE land)

Natural Gypsum Conversion Project



Current Progress to Date

- Civil/ground works commenced on site 30th October by J-F-Finnegan
- Driven RC piling completed on Site A&B.
- Syphonic drainage system modified and extended for site B.
- RC steelwork fabrication ongoing on site for NG Mill foundation and ground beams.

Works due to commence in forthcoming weeks

- Steelwork erection to commence 29th January
- Delivery of plant equipment due to start mid February.



Social Responsibilities



- £2,400 made this year in donations voted for by the employees via a token system:

Retired greyhounds trust
Leeds heart appeal
Fairburn cricket ground
Macmillan
Mind
Help For Heroes
Tiny hearts Barnsley hospital
Breast cancer haven
JDRF diabetes charity
Prince Of Wales Hospice
Trinity Mission Drop In Centre
Food Bank Knottingley



Ferrybridge 'C' Update - Decommissioning

- Work continues to facilitate the site being demolition ready
 - New 11kV Electricity Supply now energised on site
- Carpet coal removal now concluded and coal plant decommissioning underway
- Main coal stock lighting to be turned off Q1 2018
- CCTV enhancements being implemented to mitigate risk of 'dark' site
- Rail track operations to continue for Siniat – relocation of control and signalling facilities underway.
- Charitable donations from asset disposal currently totals over £21k



Ferrybridge 'C' Update - Demolition

- Four companies are undertaking site visits to prepare tender submissions
- Extension to tendering process agreed to improve robustness of bids
- Demolition contractor anticipated to establish site ~ August 2018
- HSE and EA engaged

Brotherton Ings PFA Disposal Site

- Following closure, there is a requirement for SSE to remediate Brotherton Ings PFA disposal site and follow a programme of aftercare
- One lagoon contains ash which SSE intends to reclaim prior to remediation
- No progress has been made regarding the proposed remediation of Brotherton Ings
- The EA have agreed an extension to the deadline for SSE to provide a remediation plan. This is now required by November 2019.
- For the foreseeable future, Brotherton Ings will be managed in accordance with the EA permit.



AOB

- **Next meeting - Wednesday 18th April 2018 at 10:30am**



Thank You

